

CONTAINER GLASS FORMING MACHINES AL



 **SKLOSTROJ**

MACHINE MAIN DIMENSIONS																		
Number of sections	2			4			6			8			10			12		
Center distance:	4 1/4"	5"	5 1/2"	4 1/4"	5"	5 1/2"	4 1/4"	5"	5 1/2"	4 1/4"	5"	5 1/2"	4 1/4"	5"	5 1/2"	4 1/4"	5"	5 1/2"
A [mm]	-	-	2420	2404	2404	2548	2404	2404	2548	2404	2404	2548	2404	2404	2548	2663	2663	2807
B [mm]	-	-	2916	2992	2992	2992	2992	2992	2992	3292	3292	3292	3680	3680	3680	4060	4060	4060
C [mm]	-	-	3138	3410	3410	3410	3410	3410	3410	3712	3712	3712	4100	4100	4100	4480	4480	4480
D [mm]	-	-	-	3630	3630	3630	3630	3630	3630	3932	3932	3932	4320	4320	4320	4700	4700	4700
E [mm]	-	-	1043	1170	1170	1170	1170	1170	1170	1170	1170	1170	1170	1170	1170	1429	1429	1429
F [mm]	-	-	688	835	835	835	835	835	835	835	835	835	835	835	835	1095	1095	1095
G [mm]	-	-	-	683	683	683	683	683	683	683	683	683	683	683	683	943	943	943
H [mm]	-	-	1978	4082	4082	4082	5162	5162	5162	6242	6242	6242	7322	7322	7322	8402	8402	8402
I [mm]	-	-	1560	3882	3882	3882	4962	4962	4962	6042	6042	6042	7122	7122	7122	8202	8202	8202
K [mm]	-	-	1054	1620	1620	1620	1620	1620	1620	1620	1620	1620	1620	1620	1620	1361	1361	1361
L [mm]	-	-	3936	4030	4030	4030	4030	4030	4030	4030	4030	4030	4030	4030	4030	4030	4030	4289
Metal Line [mm]	-	-	-	4500	4500	4500	4500	4500	4500	5000	5000	5000	5600	5600	5600	6000	6000	6000
N [mm]	-	-	672	630	630	672	630	630	672	630	630	672	630	630	672	630	630	672
O [mm]	-	-	-	270	270	270	270	270	270	270	270	270	810	810	810	1450	1450	1450
P [mm]	-	-	-	170	170	170	170	170	170	170	170	170	710	710	710	1250	1250	1250
Weight [kg]*	10000	10000	10000	15000	15000	15000	18000	18000	18000	25000	25000	25000	30000	30000	30000	36000	36000	36000

*/ including moulds, variables, conveyor and platforms

SPECIFICATIONS OF UTILITIES	Pressure in [MPa]	Nominal consumption per one section	Unit
Low Pressure Operating Air	0,35 ± 0,01	2,5	[Nm³.min.⁻¹]
Forming Air BB	0,35 ± 0,01	2,1	[Nm³.min.⁻¹]
Forming Air PB	0,35 ± 0,01	4,2	[Nm³.min.⁻¹]
Vacuum	0,06-0,08	1	[Nm³.min.⁻¹]
V-F Blank & Blow Side	0,008	32	[Nm³.min.⁻¹]
Stack Cooling Blank & Blow Sides	0,012	70	[Nm³.min.⁻¹]
Conveyor cooling	0,007	21	[Nm³.min.⁻¹]
Lubrication Oil	6,0	1,0	[liter per day]
Cooling Water	0,3	0,4	[liter per min.]

IS MACHINES AL SUPPORTED SOLUTIONS:

Sections: 2, 4, 6, 8, 10 & 12

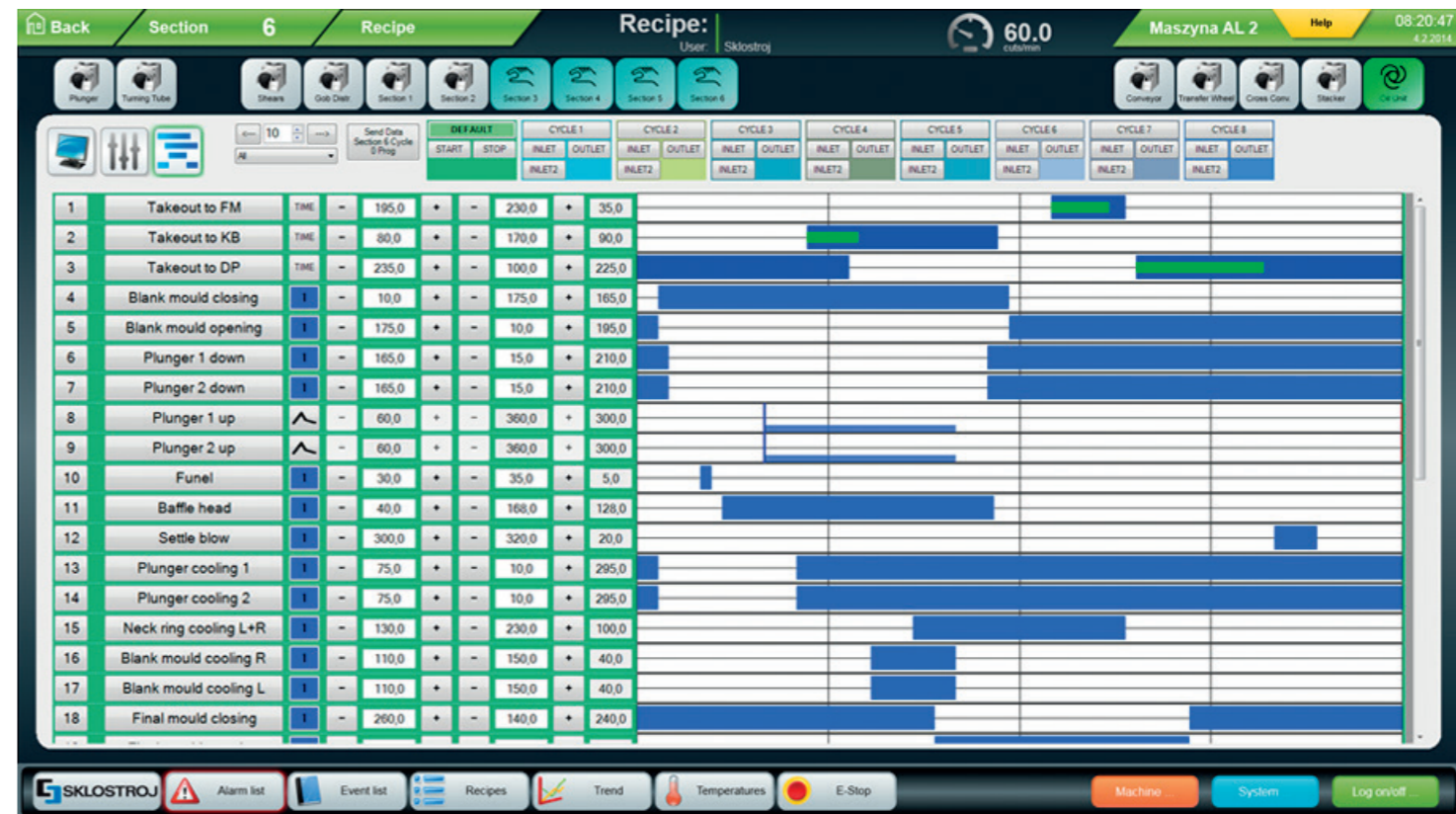
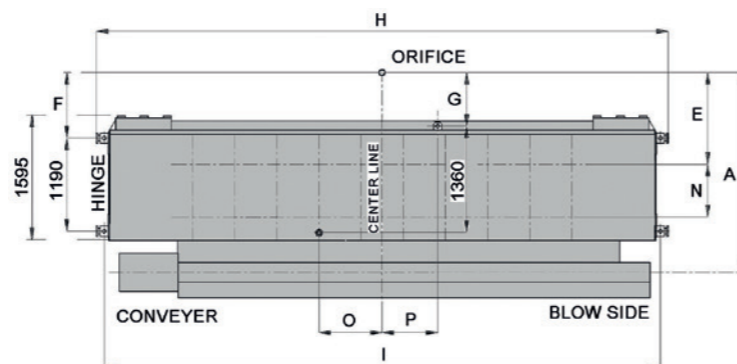
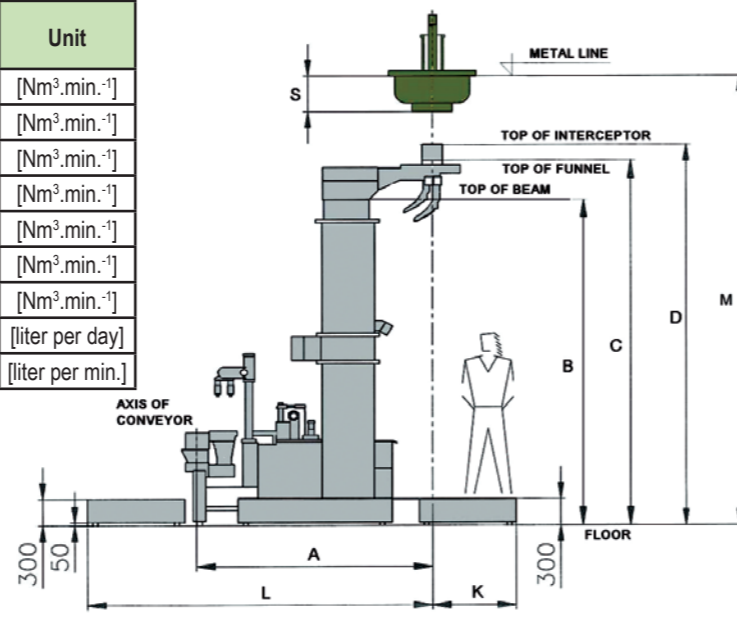
Production modes: SG, DG

DG CD: 4 1/4", 5", 5 1/2"

Technology: BB/PB/NNPB/LPBB®



PRODUCT LIMITS	*/ valid for standard execution											
Center Distance	4 1/4" DOUBLE GOB			5" DOUBLE GOB			5 1/2" DOUBLE GOB			SINGLE GOB		
Technology	B&B	P&B	NNPB	B&B	P&B	NNPB	B&B	P&B	NNPB	B&B	P&B	NNPB
Ware Range Reference	dimensions in [mm]			dimensions in [mm]			dimensions in [mm]			dimensions in [mm]		
Min. Height Under Finish*	58/42			66			66			120		
Max. Height Under Finish	282	301	282	325	290	325	345	300	345	345	325	345
Max. Body Diameter	75 V-F; 90 Stack			82 V-F; 102 Stack			105 V-F; 110 Stack			155 V-F; 178 Stack		
Max. Finish Diameter	48	83	48	48	90	48	48	90	48	80	120	48



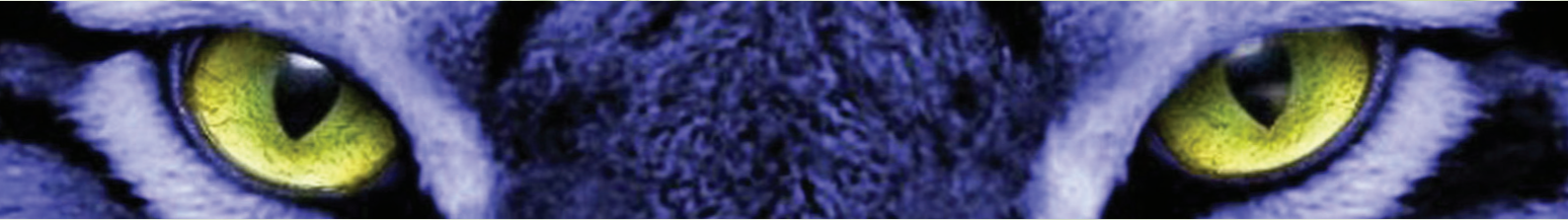
BENEFITS

- Precise and user friendly control & drive system "SDT-10" based on 100% standard components – Siemens
- VPN assistance
- Optional portable HMI
- Wide range of ware sizes production – up to body diameter 178 mm and with optional packet for extra tall products – around 500 mm

FEATURES

- SERVO gob distributor
- Gob delivery system with "V" shape
- SERVO invert mechanism - optional
- SERVO take-out mechanism - optional
- E-pusher mechanism
- Quick change accessories
- Wind-Stack Cooling or 360° axial cooling in blank and blow moulds and Vertiflow in blow moulds, separated neck-ring cooling in blank moulds and optional upper neck cooling Oberwind in blow moulds
- Proportional technology for plunger up, plunger cooling/ counter blow and final blow
- SERVO conveyor with silent chain 200 mm with safety ladder and motorized leveling
- Electric control of dead plate cooling
- Automatic central lubrication system Lincoln
- Available optional LPBB technology
- Available interactive training terminal ITT

SKLOSTROJ



Location:

50°35'4.448"N, 15°7'14.22"E

since 1950



Sklostroj Turnov CZ, s.r.o.

No 210

512 61 Prepere

Czech Republic

www.sklostroj.cz

